



**5/612 Cross Road SOUTH PLYMPTON SA**

**2** **1** **1**

SOLD BY TOBY SHIPWAY - TO GET THE MAXIMUM PRICE WITH THE MINIMUM OF FUSS CALL TOBY SHIPWAY TODAY ON 0413 600 919

Centrally located between the city and the beach, this is an excellent opportunity to enjoy a great lifestyle in a very convenient location.

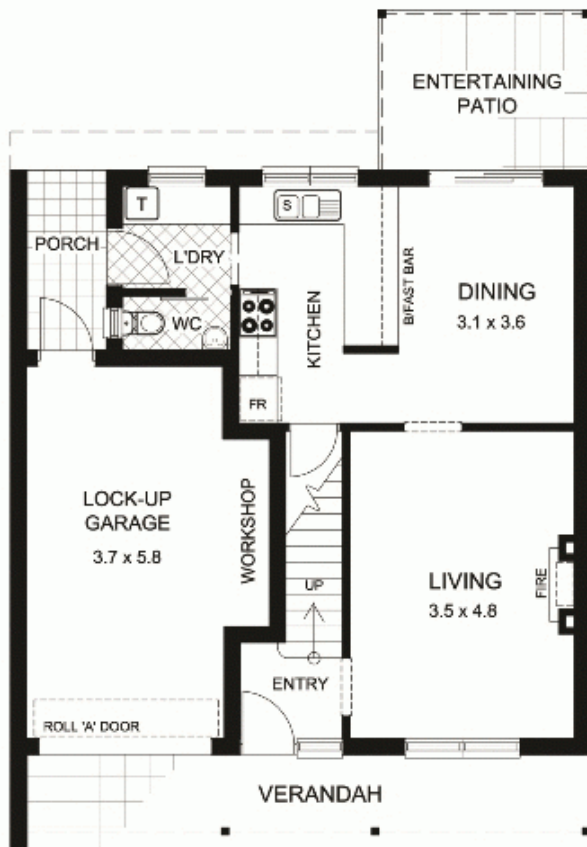
This neat and tidy 2 storey townhouse boasts excellent accommodation with spacious light filled living and dining downstairs. The kitchen offers ample bench space, a walk in pantry and a pleasant outlook over rear courtyard.

This flows through to the second w/c and laundry with direct access outside to the paved courtyard and through to the lock up garage.

**Building Size** : 112 sqm  
**View** : <https://www.bruse.com.au/sale/sa/south-south-east-suburbs/south-plympton/residential/townhouse/5550605>



**Toby Shipway**  
**8413 8181**



This floor plan is for illustration purposes only and all measurements are approximate. Any fixtures shown may not necessarily be included in the sale contract and it is essential that any queries are directed to the agent, and any information that is intended to be relied upon should be independently verified. Neither the agent, vendor or the illustrators take any responsibility for any omission, wrongful inclusion or typographical error which may occur in this drawing as it is intended as an artist impression only. While every endeavour has been made to verify the correct details in this publication, neither the agent, vendor, nor typesetters accept any responsibility for any error or omission.

