



8 Orchard Grove NEWTON SA

3 1 2

SOLD BY TOBY SHIPWAY - TO GET THE MAXIMUM PRICE WITH THE MINIMUM OF FUSS CALL TOBY SHIPWAY TODAY ON 0413 600 919

Situated in a great location close to public transport, schools, and endless shopping options, this is a wonderful opportunity to move straight in and enjoy this fantastic home.

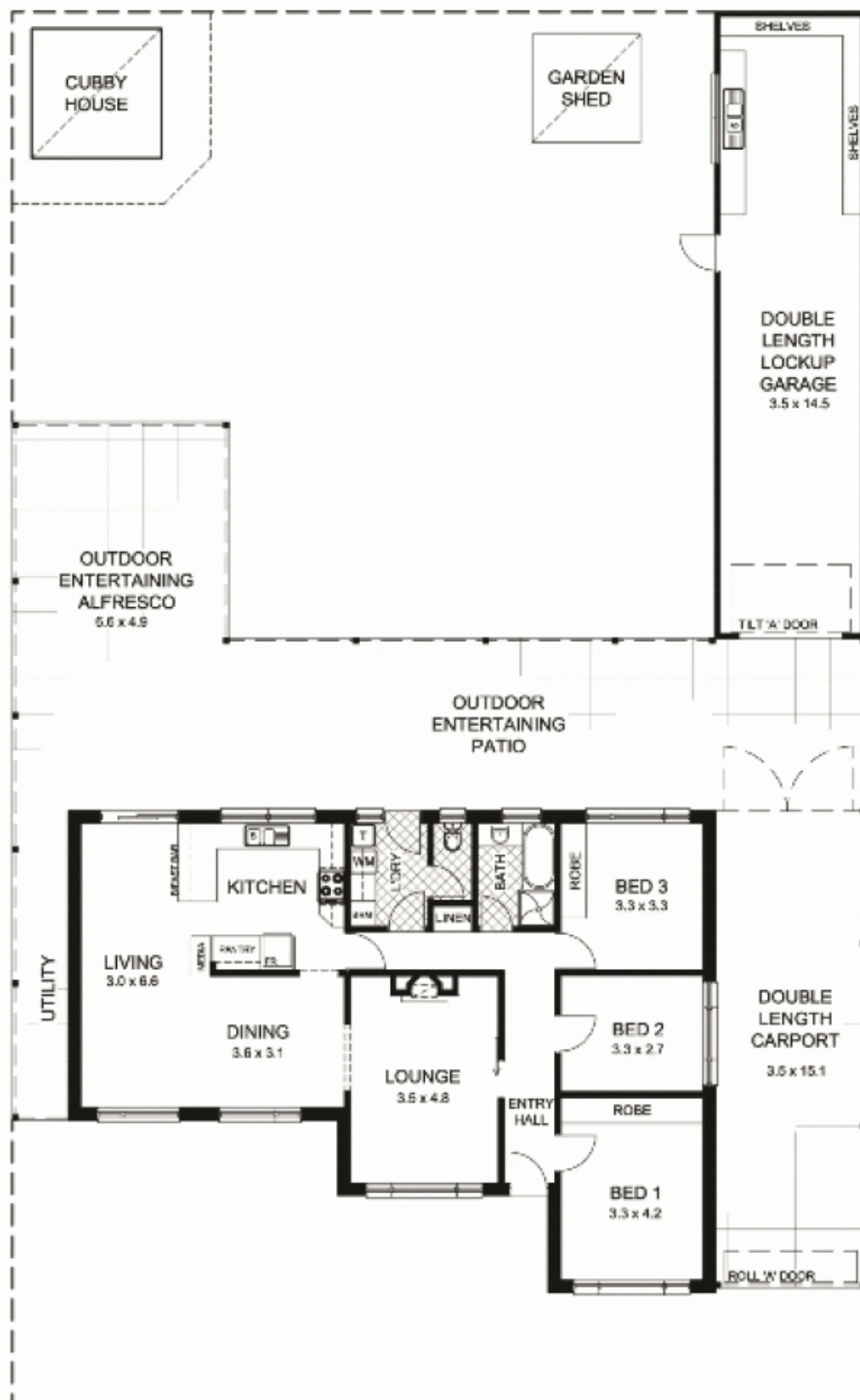
This appealing solid brick home comprises of 3 generous bedrooms, two with built in robes. The 'hub of the home' living area flows through to the formal dining and second living/dining area with direct access outside to the rear of the property.

The kitchen is very well appointed with two pack cupboard finishes, gas cook top, dishwasher, Pura tap, quality

Land Size : 701 sqm
View : <https://www.bruse.com.au/sale/sa/north-north-east-suburbs/newton/residential/house/5550599>



Toby Shipway
8413 8181



This floor plan is for illustration purposes only and all measurements are approximate. Any fixtures shown may not necessarily be included in the sale contract and it is essential that any queries are directed to the agent, and any information that is intended to be relied upon should be independently verified. Neither the agent vendor or the illustrators take any responsibility for any omission, wrongful inclusion or typographical error which may occur in this drawing as it is intended as an artist impression only. While every endeavor has been made to verify the correct details in this publication, neither the agent, vendor, nor typesetters accept any responsibility for any error or omission.