



12 Henry Street NORWOOD SA

4 2 2

TO GET THE MAXIMUM PRICE WITH THE MINIMUM OF FUSS CALL BEVAN BRUSE TODAY on 0419 809 852 OR THEON BRUSE on 0419 816 470.

View : <https://www.bruse.com.au/sale/sa/eastern-suburbs/norwood/residential/house/5550595>

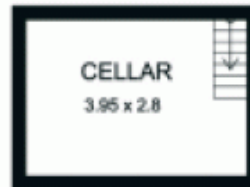
Wine cellar. Spectacular quiet location. Seconds to vibrant Norwood cafes, restaurants, hotels, cinemas and the general lifestyle of living in Norwood. What a great lifestyle.

This wonderful residence built in 1900 is full of yesterday's character and charm but with quality additions and extensions bringing it to a year 2010 lifestyle property.

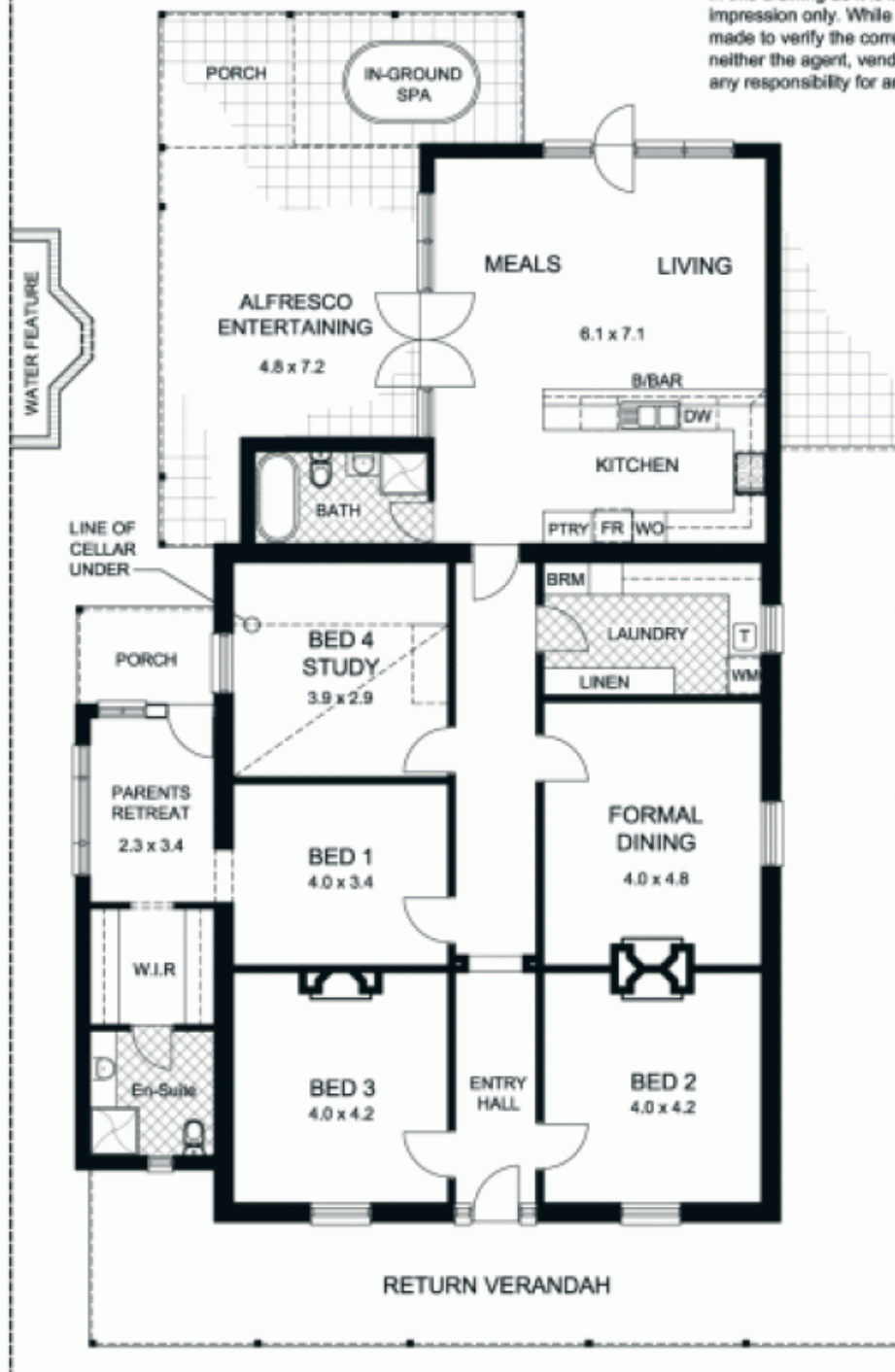
The home itself currently disposes a wide entrance hallway that leads to up to four bedrooms and a formal sitting room or dining room. From the main bedroom suite there is a parents retreat, a large walk in dressing room and a good size ensuite facility.



Bevan Bruse
08 8431 8181

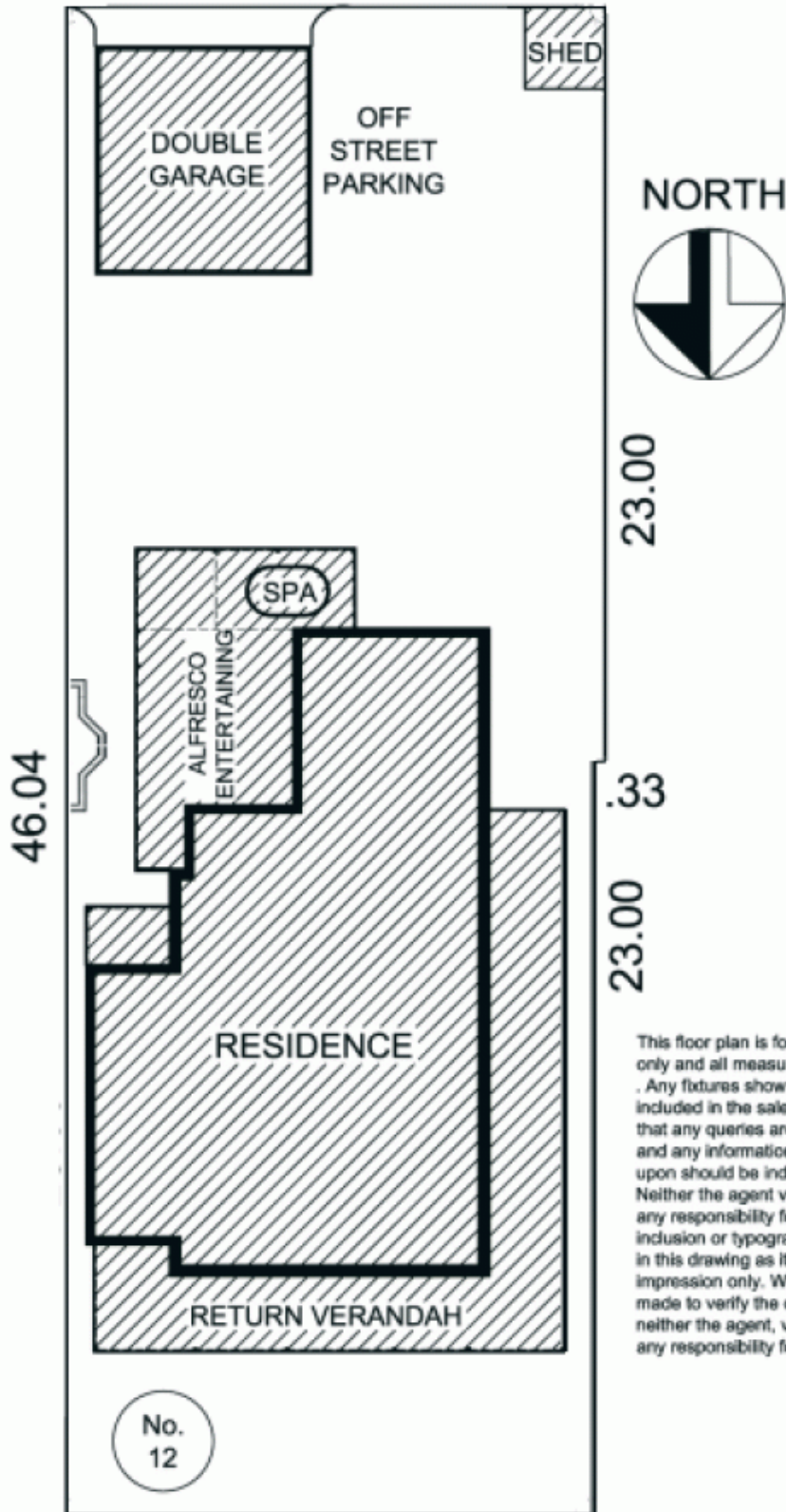


This floor plan is for illustration purposes only and all measurements are approximate . Any fixtures shown may not necessarily be included in the sale contract and it is essential that any queries are directed to the agent, and any information that is intended to be relied upon should be independently verified . Neither the agent vendor or the illustrators take any responsibility for any omission, wrongful inclusion or typographical error which may occur in this drawing as it is intended as an artist impression only. While every endeavor has been made to verify the correct details in this publication, neither the agent, vendor, nor typesetters accept any responsibility for any error or omission.



WESLEY LANE

15.76



NORTH

23.00

.33

23.00

This floor plan is for illustration purposes only and all measurements are approximate. Any fixtures shown may not necessarily be included in the sale contract and it is essential that any queries are directed to the agent, and any information that is intended to be relied upon should be independently verified. Neither the agent vendor or the illustrators take any responsibility for any omission, wrongful inclusion or typographical error which may occur in this drawing as it is intended as an artist impression only. While every endeavor has been made to verify the correct details in this publication, neither the agent, vendor, nor typesetters accept any responsibility for any error or omission.

No.
12

15.43

HENRY STREET