



### 23 Wisteria Grove FELIXSTOW SA

3 2 2

SOLD BY TOBY SHIPWAY - TO GET THE MAXIMUM PRICE WITH THE MINIMUM OF FUSS CALL TOBY SHIPWAY TODAY ON 0413 600 919

**Building Size** : 20 sqm  
**Land Size** : 467 sqm  
**View** : <https://www.bruse.com.au/sale/sa/easter-n-suburbs/felixstow/residential/house/5550581>

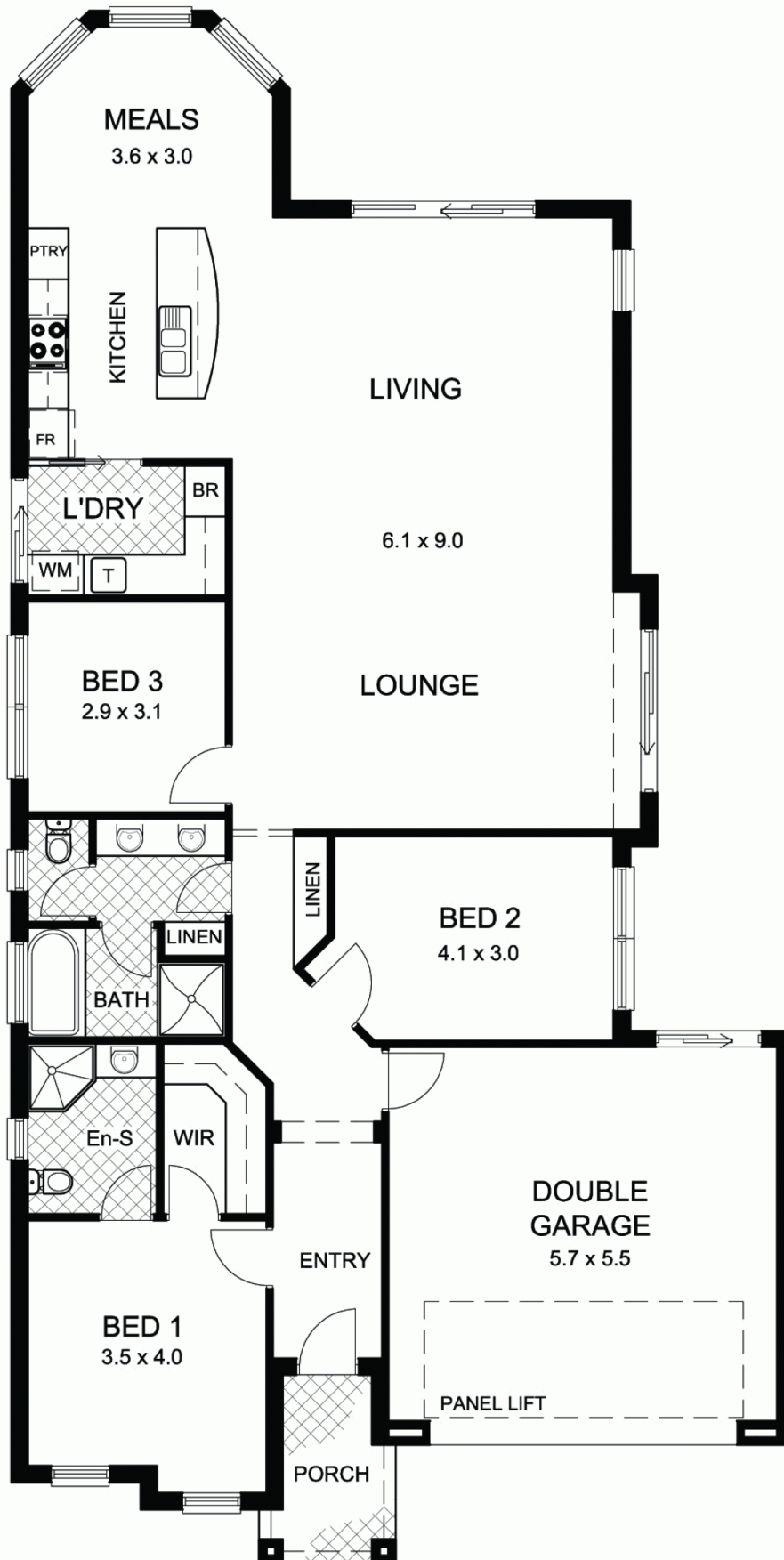
Nestled in an excellent location amongst other high quality homes with great street appeal, you are welcomed with a neighbour friendly feel from the moment you enter the street.

Only 10 minutes to the city and close to all the conveniences of great shopping, restaurants, public transport and a choice of schools. Linear Park, Payneham Swimming Pool and the library are also all within a short walking distance.

Built in 2002 by Marshall Thompson Homes, this designer home has been built for the modern lifestyle offering



**Toby Shipway**  
8413 8181



This floor plan is for illustration purposes only and all measurements are approximate. Any fixtures shown may not necessarily be included in the sale contract and it is essential that any queries are directed to the agent, and any information that is intended to be relied upon should be independently verified. Neither the agent vendor or the illustrators take any responsibility for any omission, wrongful inclusion or typographical error which may occur in this drawing as it is intended as an artist impression only. While every endeavour has been made to verify the correct details in this publication, neither the agent, vendor, nor typesetters accept any responsibility for any error or omission.