



**20A Somerset Avenue CLEARVIEW SA**

3 2 1

SOLD BY THE BRUSE DUO. FOR THE MAXIMUM PRICE WITH THE MINIMUM OF FUSS CALL BEVAN BRUSE on 0419 809 852 OR THEON BRUSE on 0419 816 470.

**View** : <https://www.bruse.com.au/sale/sa/north-north-east-suburbs/clearview/residential/house/5550577>

This new double storey home has a great look about it and is a home that buyers will absolutely love.

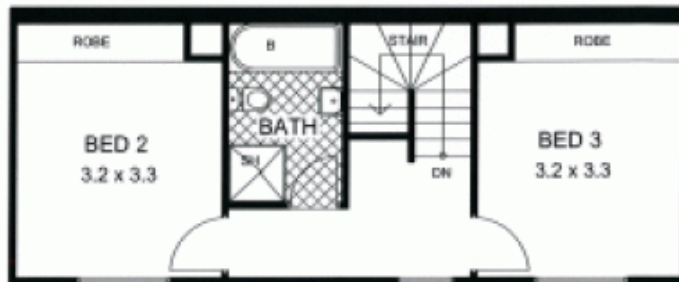
The home has a wonderful entrance hallway that leads to a stunning kitchen, living room and dining room of extremely generous proportions. The quality fixtures and fittings in the kitchen give this home the look for 2010 and beyond.

From the living room, double doors open out to an excellent outdoor living area with further access to the inground pool.

The home on the lower level includes a main bedroom suite of generous proportions including ensuite and walk in

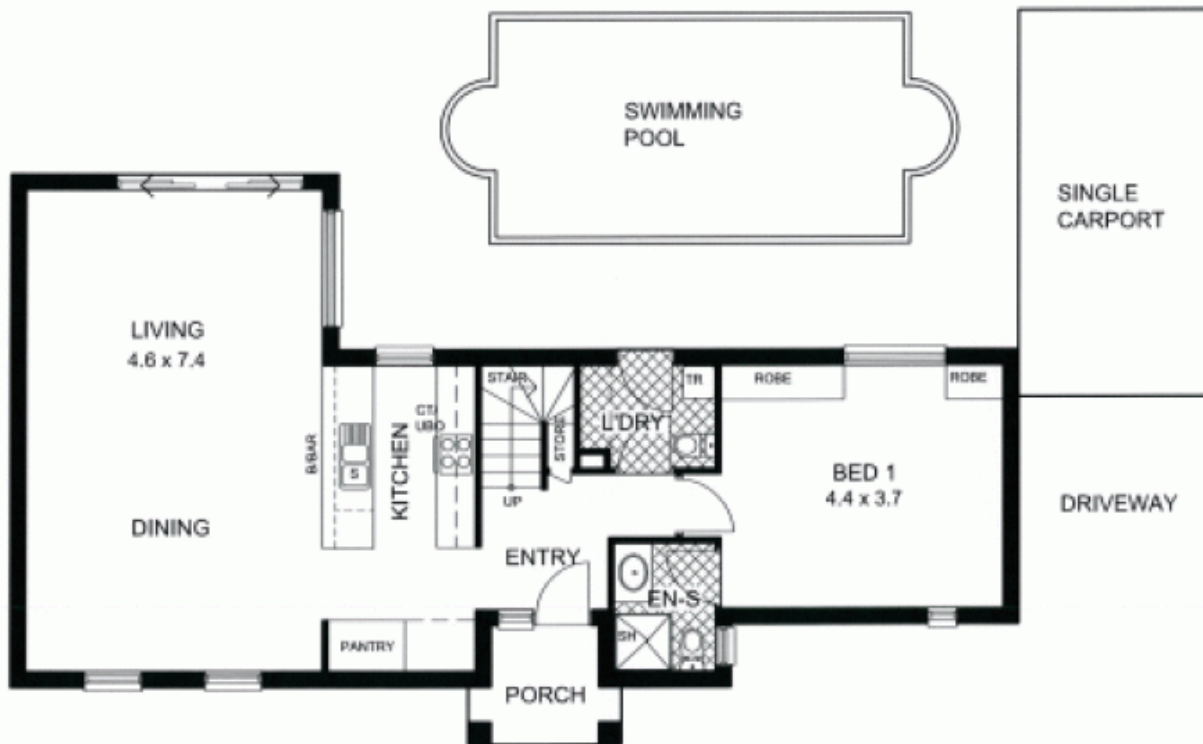


**Bevan Bruse**  
**08 8431 8181**



AREA	PER m <sup>2</sup>
LOWER LIVING	- 90.42
UPPER LIVING	- 45.45
CARPORT	- 18.00
PORCH	- 3.75
<b>TOTAL AREA</b>	<b>- 157.62</b>

## UPPER LEVEL



## GROUND LEVEL

This floor plan is for illustration purposes only and all measurements are approximate. Any fixtures shown may not necessarily be included in the sale contract and it is essential that any queries are directed to the agent, and any information that is intended to be relied upon should be independently verified. Neither the agent vendor or the illustrators take any responsibility for any omission, wrongful inclusion or typographical error which may occur in this drawing as it is intended as an artist impression only. While every endeavour has been made to verify the correct details in this publication, neither the agent, vendor, nor typesetters accept any responsibility for any error or omission.