



**35B Reynell Road ROSTREVOR SA**

3 2 2

FOR THE MAXIMUM PRICE WITH THE MINIMUM OF FUSS CALL BEVAN BRUSE on 0419 809 852 OR THEON BRUSE on 0419 816 470.

**View** : <https://www.bruse.com.au/sale/sa/eastern-suburbs/rostrrevor/residential/house/5550574>

You will be extremely impressed with the thought & effort that has been put into the design & build quality of this designer home.

Set over two levels, it is freestanding and Torrens Titled, set on 349m2 of lovely landscaped land. Plenty of room in the rear yard for the family to enjoy.

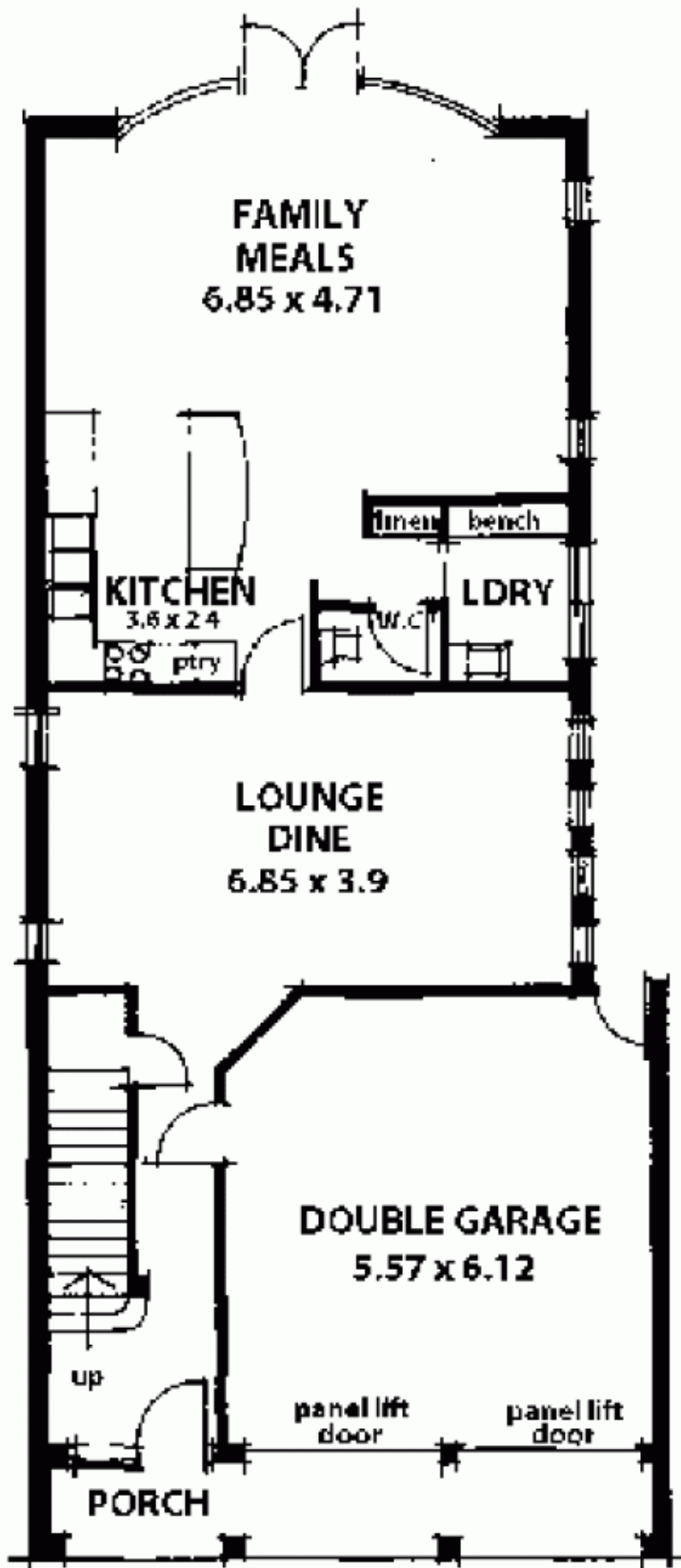


**Bevan Bruse**  
**08 8431 8181**

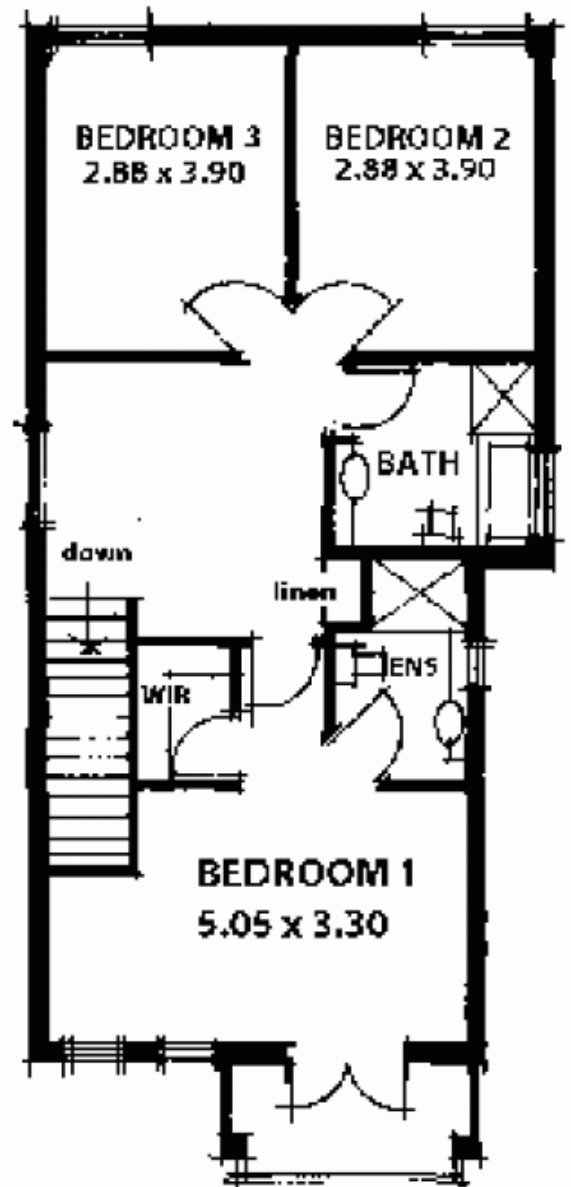
Larger than most new homes at 235m2 of living, the home features 3 living areas.

The lower level features a generous formal lounge and formal dining area.

This great area could be set-up as a cinema or games



LOWER LEVEL



UPPER LEVEL