



18 Ayre Street SOUTH PLYMPTON SA

3 1 1

SOLD IN THE FIRST WEEK!
TO GET THE MAXIMUM PRICE WITH THE MINIMUM FUSS CALL BEVAN BRUSE ON 0419 809 852 OR THEON BRUSE ON 0419 816 470.

View : <https://www.bruse.com.au/sale/sa/south-south-east-suburbs/south-plympton/residential/house/5550572>

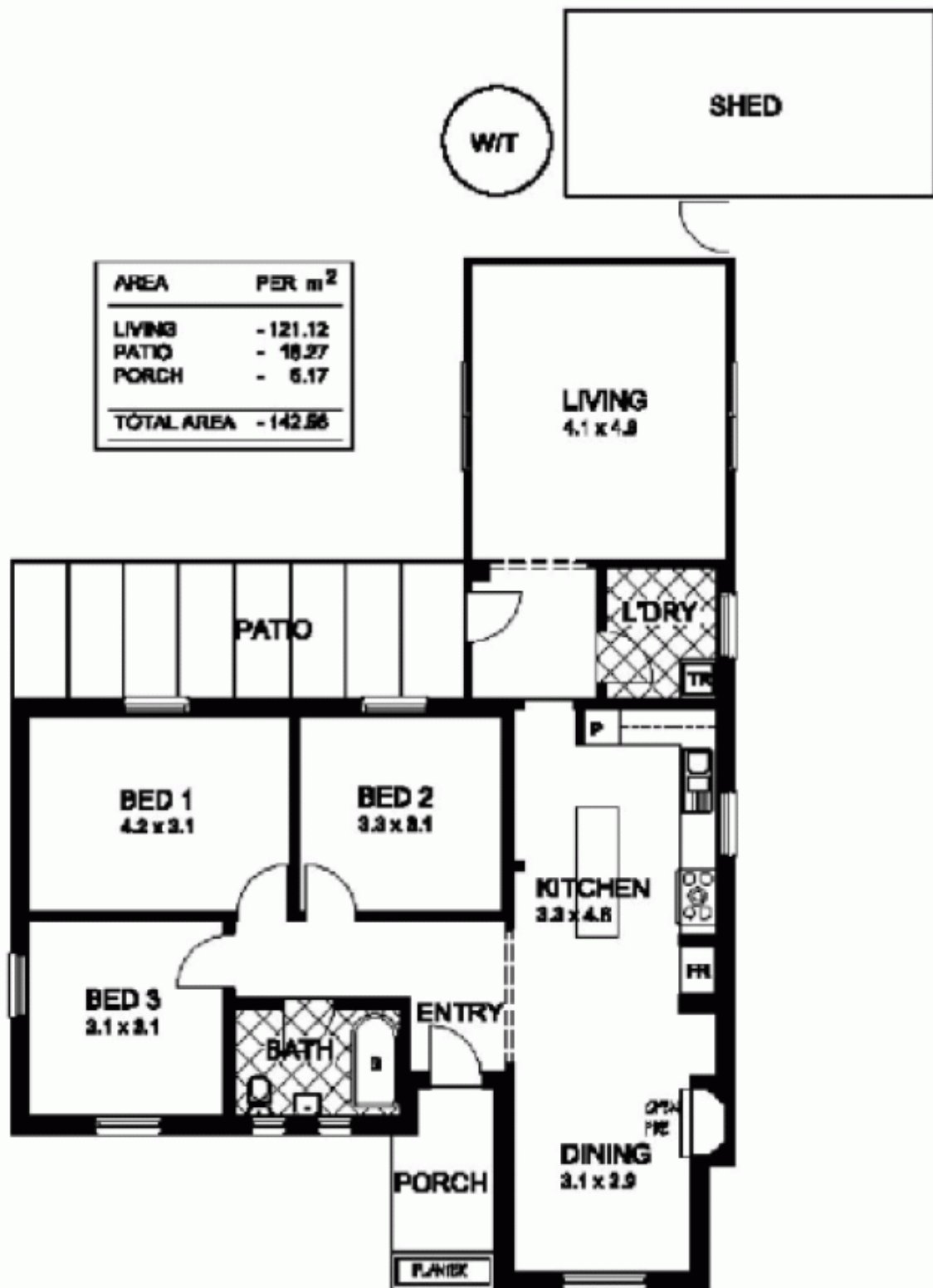
This is a wonderful home ideally located close to every convenience of South Plympton and close the city and also close to the beach.

It is a great family residence offering excellent accommodation on a good size allotment of land measuring some 747m2 with a 19.89m frontage.

The property includes an entrance area that leads to an attractive hub of the home kitchen dining area. This generous area has a great feel about it and offers an open plan structure that will suit many buyers. The kitchen has also been upgraded.



Bevan Bruse
08 8431 8181



This floor plan is for illustration purposes only and all measurements are approximate. Any fixtures shown may not necessarily be included in the sale contract and it is essential that any queries are directed to the agent, and any information that is intended to be relied upon should be independently verified. Neither the agent nor the illustrators take any responsibility for any omissions, wrongful inclusion or geographical errors which may occur in this drawing as it is intended as an artist impression only. While every endeavour has been made to verify the correct details in this presentation, neither the agent, vendor, nor specialists accept any responsibility for any error or omission.