



5 Ayredale Avenue CLEARVIEW SA

3 1

****SOLD - AWAITING SETTLEMENT****

View : <https://www.bruse.com.au/sale/sa/north-north-east-suburbs/clearview/residential/house/5550531>

SOLD AT THE FIRST OPEN - TO GET THE MAXIMUM PRICE WITH THE MINIMUM OF FUSS CALL BEVAN BRUSE & THEON BRUSE TODAY ON 0419 809 852 OR 0419 816 470

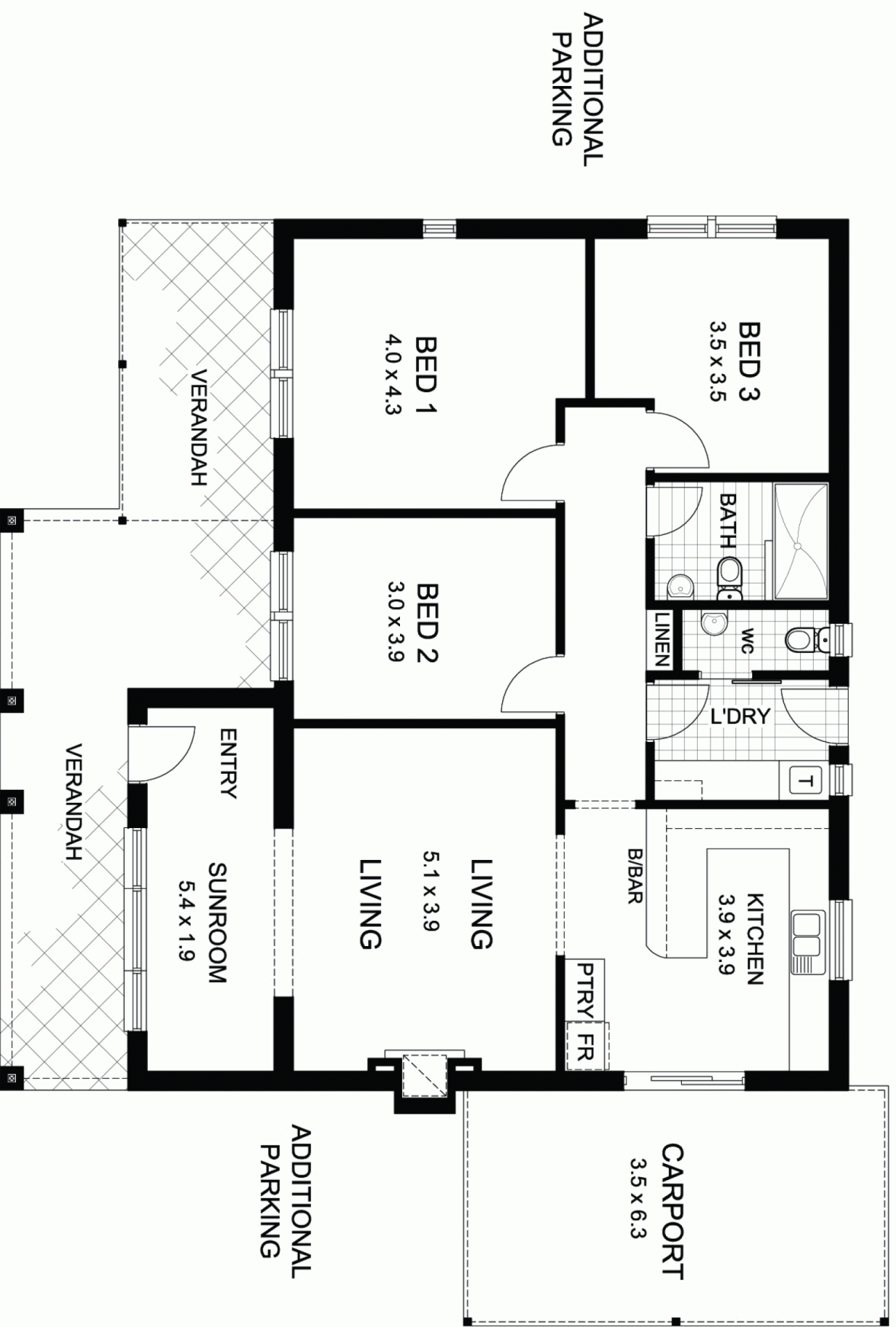
This excellent home offers accommodation that is generous in every respect and the very large living areas will attract many buyers.



Bevan Bruse
08 8431 8181

There is the opportunity for multiple car parking together with a carport attached to the residence. From the side street there are access gates that are ideal for a caravan, boat, truck or trailer.

Upon entry the property boasts a generous living and



This floor plan is for illustration purposes only and all measurements are approximate. Any fixtures shown may not necessarily be included in the sale contract and it is essential that any queries are directed to the agent, and any information that is intended to be relied upon should be independently verified. Neither the agent vendor or the illustrators take any responsibility for any omission, wrongful inclusion or typographical error which may occur in this drawing as it is intended as an artist impression only. While every endeavor has been made to verify the correct details in this publication, neither the agent, vendor, nor typesetters accept any responsibility for any error or omission.