



**3 Woodcroft Avenue ST GEORGES SA**

3 1 2

**\*\*SOLD - AWAITING SETTLEMENT\*\***

SOLD AT THE FIRST OPEN - TO GET THE MAXIMUM PRICE WITH THE MINIMUM OF FUSS CALL BEVAN BRUSE & THEON BRUSE TODAY ON 0419 809 852 OR 0419 816 470

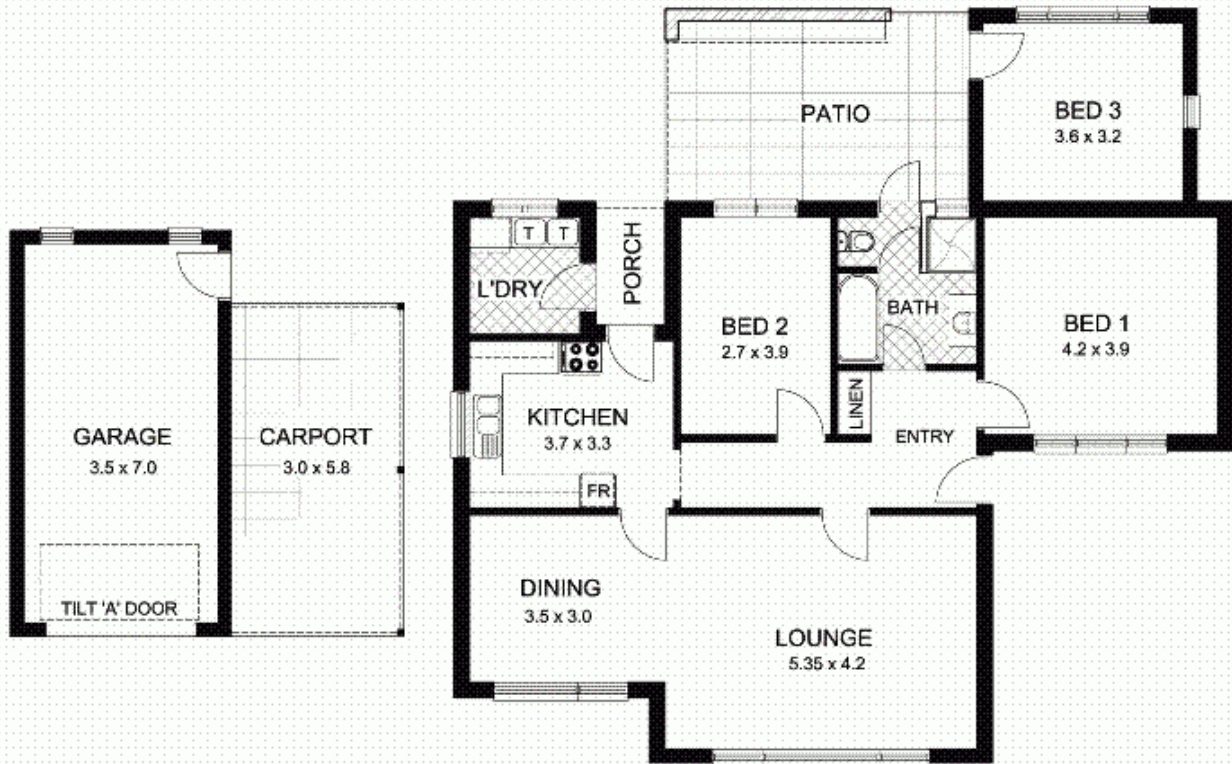
**Land Size** : 1040 sqm  
**View** : <https://www.bruse.com.au/sale/sa/eastern-suburbs/st-georges/residential/house/5550526>

This is a great property and owned by one family since it was built in 1950. The property is positioned on an allotment of land of 1040m<sup>2</sup> - 21.34m x 48.77m (70.01ft x 160.01ft). It is a great allotment of land ideal for development and the location that it is in means buyers will be very keen to acquire it.



**Bevan Bruse**  
**08 8431 8181**

The home itself is in excellent condition, has been well maintained and gives buyers the opportunity to buy the



This floor plan is for illustration purposes only and all measurements are approximate. Any fixtures shown may not necessarily be included in the sale contract and it is essential that any queries are directed to the agent, and any information that is intended to be relied upon should be independently verified. Neither the agent nor the illustrators take any responsibility for any omission, wrongful inclusion or typographical error which may occur in this drawing as it is intended as an artist impression only. While every endeavor has been made to verify the correct details in this publication, neither the agent, vendor, nor typesetters accept any responsibility for any error or omission.