



**72 Linden Street (corner of Seaforth Avenue)
HAZELWOOD PARK SA**

3  **2**  **2** 

SOLD BY THE BRUSE DUO - TO GET THE MAXIMUM PRICE WITH THE MINIMUM OF FUSS CALL BEVAN BRUSE & THEON BRUSE TODAY ON 0419 809 852 OR 0419 816 470.

Land Size : 687 sqm
View : <https://www.bruse.com.au/sale/sa/eastern-suburbs/hazelwood-park/residential/house/5550503>

In a Beautiful location on an allotment of 687m² on the corner of Seaforth Avenue, Just move in, live and enjoy the residence.

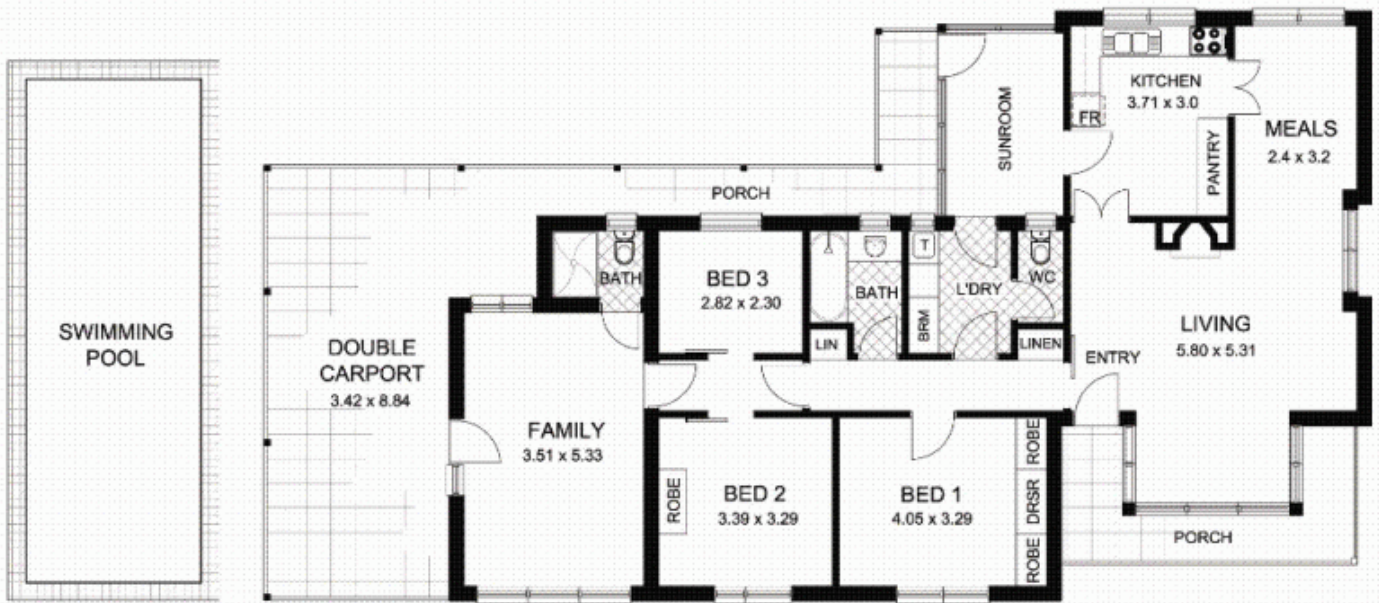
A marvellous location on a corner allotment of 687m² (15.24m X 45.72m).

Located on the corner of Seaforth Avenue, this excellent property will suit family buyers. Offering in-ground pool, three bedrooms, generous family room and two bathrooms.



Bevan Bruse
08 8431 8181

This home is excellently located close to every



This floor plan is for illustration purposes only and all measurements are approximate. Any fixtures shown may not necessarily be included in the sale contract and it is essential that any queries are directed to the agent, and any information that is intended to be relied upon should be independently verified. Neither the agent vendor or the illustrators take any responsibility for any omission, wrongful inclusion or typographical error which may occur in this drawing as it is intended as an artist impression only. While every endeavour has been made to verify the correct details in this publication, neither the agent, vendor, nor typesetters accept any responsibility for any error or omission.