



48 Yeronga Avenue KENSINGTON PARK SA

2 2

SOLD AT THE FIRST OPEN - TO GET THE MAXIMUM PRICE WITH THE MINIMUM OF FUSS CALL BEVAN BRUSE & THEON BRUSE TODAY ON 0419 809 852 OR 0419 816 470

Land Size : 778 sqm
View : <https://www.bruse.com.au/sale/sa/eastern-suburbs/kensington-park/residential/house/5550498>

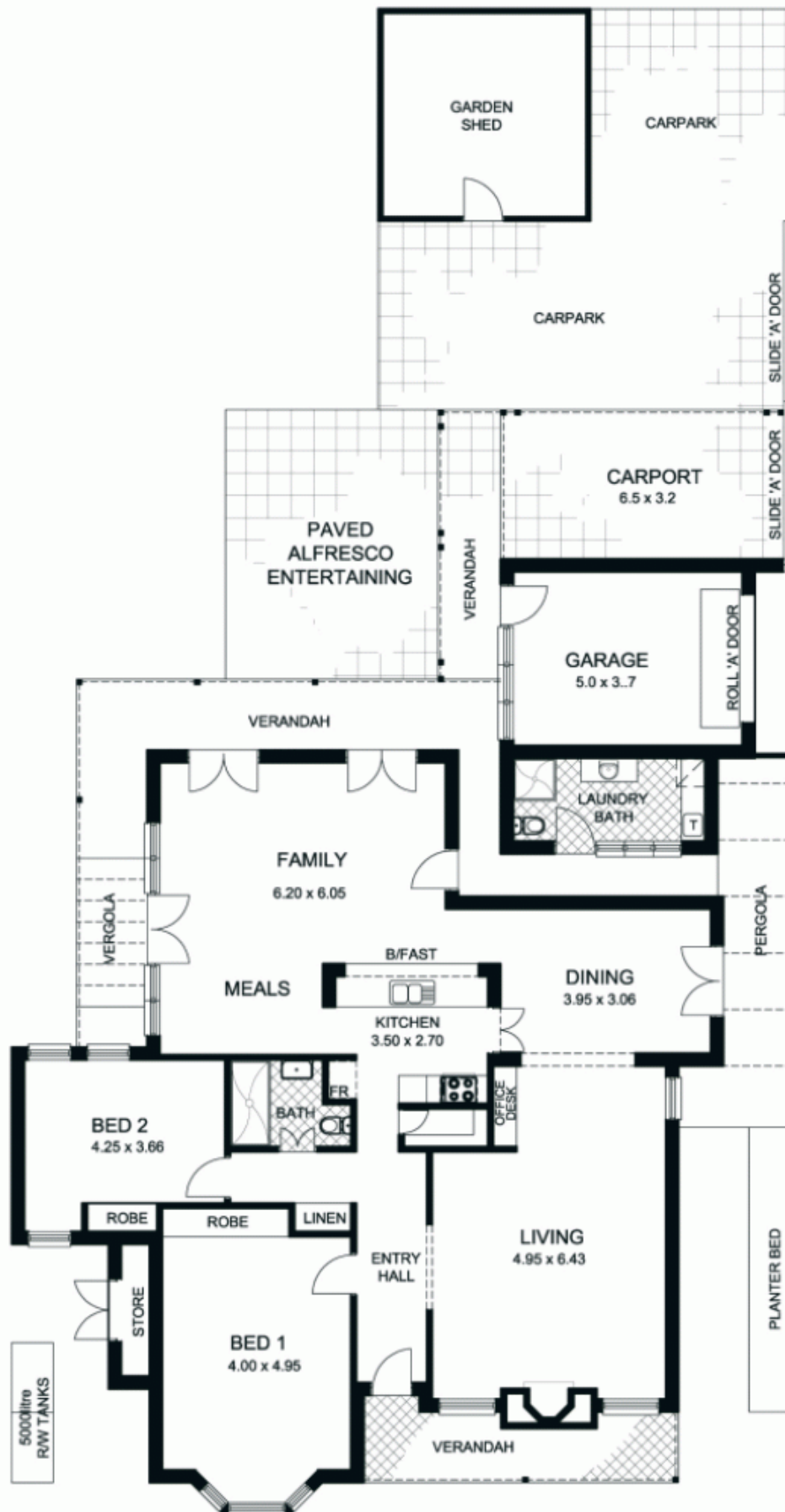
A charming elegant home in a wonderful location close to all conveniences of the Eastern suburbs positioned on an excellent corner allotment of approximately 778m² with extra car parking for a caravan or a boat. A stunning garden surrounds the home.



Bevan Bruse
08 8431 8181

This wonderful home offers the opportunity for buyers to just move in live and enjoy an extraordinary life. The home also offers a certain character and charm that is rare.

The home includes an impressive entrance hallway that



This floor plan is for illustration purposes only and all measurements are approximate. Any fixtures shown may not necessarily be included in the sale contract and it is essential that any queries are directed to the agent, and any information that is intended to be relied upon should be independently verified. Neither the agent vendor or the illustrators take any responsibility for any omission, wrongful inclusion or typographical error which may occur in this drawing as it is intended as an artist impression only. While every endeavour has been made to verify the correct details in this publication, neither the agent, vendor, nor typesetters accept any responsibility for any error or omission.