



2 Ellis Ave, Cnr Bray Street MORPHETTVILLE SA

2 **1** **1**

****SOLD - AWAITING SETTLEMENT****

SOLD BY THE BRUSE DUO - TO GET THE MAXIMUM PRICE WITH THE MINIMUM OF FUSS CALL BEVAN BRUSE & THEON BRUSE TODAY ON 0419 809 852 OR 0419 816 470.

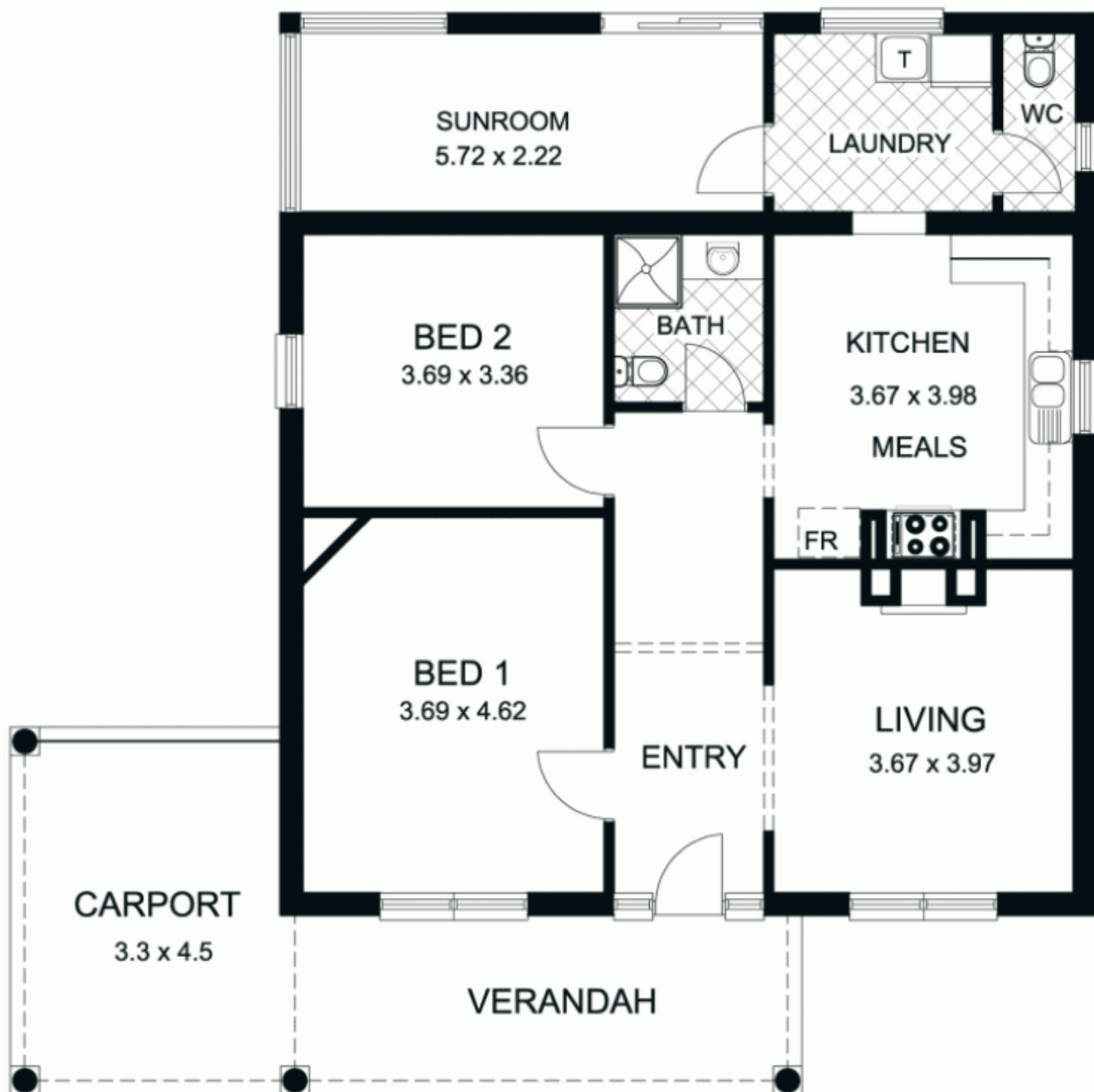
The property includes 6 excellent stables and a home on the corner of Bray Street, right opposite the racecourse and positioned in front one of the walk-ways across to the Morphettville racecourse.

The property offers a home and stables. The stables are in excellent condition and the land has ample room for a horse float and vehicles. There are side access gates giving direct access to the racecourse by just crossing Bray Street.

Land Size : 700 sqm
View : <https://www.bruse.com.au/sale/sa/south-south-east-suburbs/morphettville/residential/home/5550476>



Bevan Bruse
08 8431 8181



This floor plan is for illustration purposes only and all measurements are approximate. Any fixtures shown may not necessarily be included in the sale contract and it is essential that any queries are directed to the agent, and any information that is intended to be relied upon should be independently verified. Neither the agent vendor or the illustrators take any responsibility for any omission, wrongful inclusion or typographical error which may occur in this drawing as it is intended as an artist impression only. While every endeavour has been made to verify the correct details in this publication, neither the agent, vendor, nor typesetters accept any responsibility for any error or omission.

BRAY STREET

16.09

45.07

45.07

FENCE

STABLE
①

STABLE
④

STABLE
②

STABLE
⑤

STABLE
③

STABLE
⑥

RESIDENCE

CARPORT

VERANDAH

LOT
12

16.12

ELLIS AVENUE