



18B Shirley Avenue TRANMERE SA

3 2 2

This property will be desired by many buyers from all walks of life as it is a home that offers excellent accommodation with double lock-up garage.

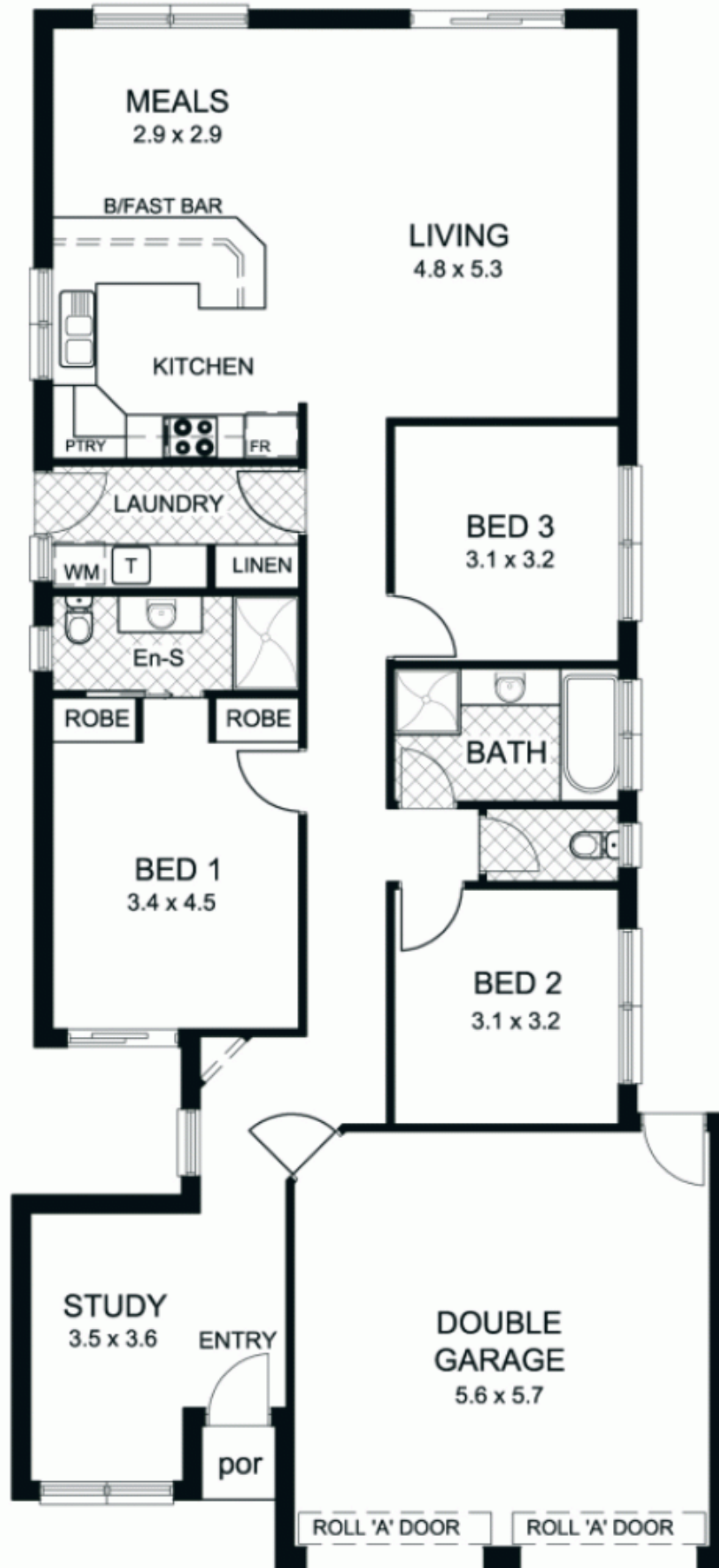
The home includes an entrance hallway that leads to a sitting room or separate study room if so desired. Also comprising 3 good size bedrooms, main bedroom has ensuite and walk-in robe. There is also a generous main bathroom and a large laundry utility room.

The living area to the rear of the property is very generous and it offers "hub of the home" living where lifestyle becomes a great thing. You can walk straight outside to the outdoor living area and enjoy the environment of the well proportioned and established landscaped gardens.

Land Size : 400 sqm
View : <https://www.bruse.com.au/sale/sa/eastern-suburbs/tranmere/residential/house/5550431>



Bevan Bruse
08 8431 8181



This floor plan is for illustration purposes only and all measurements are approximate. Any fixtures shown may not necessarily be included in the sale contract and it is essential that any queries are directed to the agent, and any information that is intended to be relied upon should be independently verified. Neither the agent vendor or the illustrators take any responsibility for any omission, wrongful inclusion or typographical error which may occur in this drawing as it is intended as an artist impression only. While every endeavour has been made to verify the correct details in this publication, neither the agent, vendor, nor typesetters accept any responsibility for any error or omission.