



3A Buttery Avenue ROSTREVOR SA

4 2 2

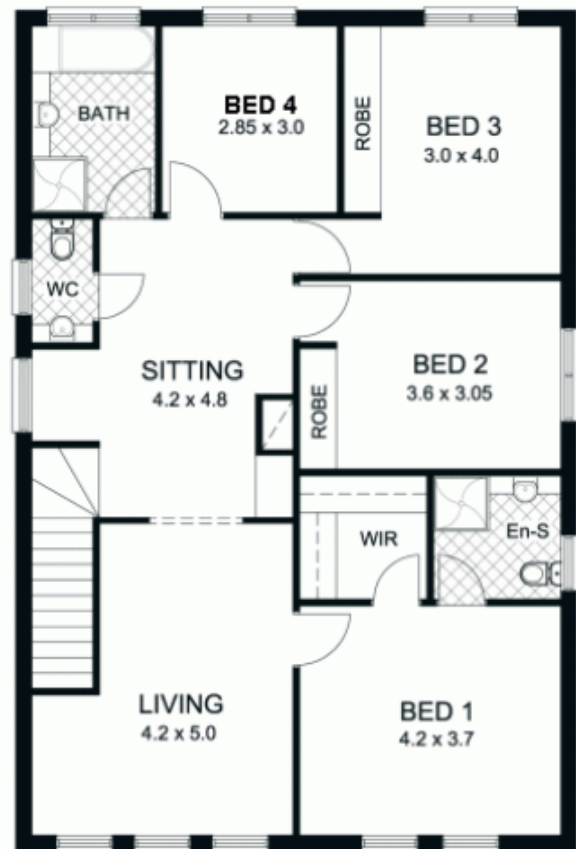
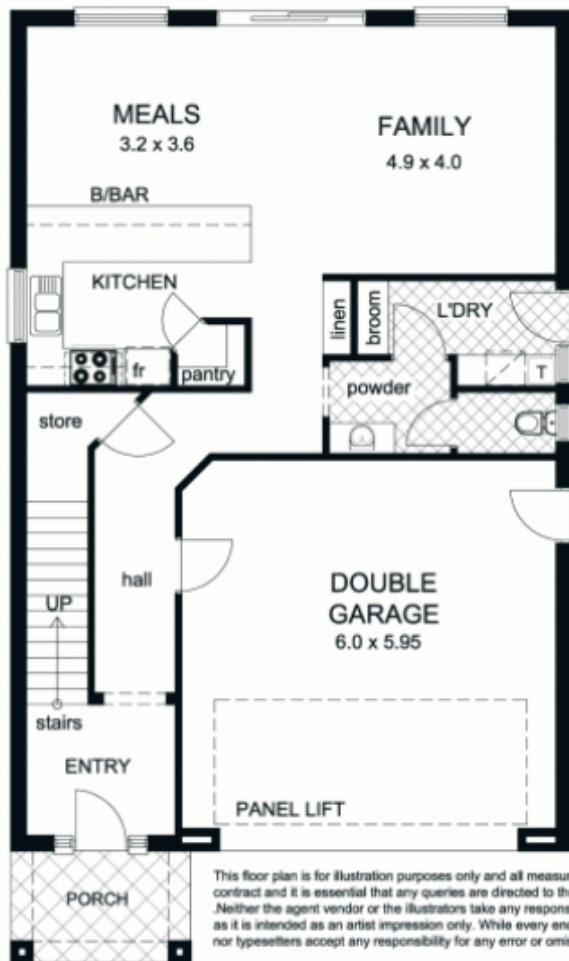
This great low maintenance family home is well located with street frontage in a quiet tree lined street. The home offers excellent accommodation of 248m² of living. The wide entry leads to the 'hub of the home' everyday meals and everyday living area. This wonderful area is complimented by an abundance of natural light and opens out to the outdoor entertaining area and landscaped garden, a great area for alfresco living. Adjacent is the generous size designer kitchen which features a walk-in pantry, extensive storage and bench space and quality appliances.

The lower level to the home is well designed for family living. There is a large landing area which could be used as a multiple study room or even another living area which has direct access to the main bedroom suite, making a great parents retreat or 3rd living room. The main bedroom suite

View : <https://www.bruse.com.au/sale/sa/eastern-suburbs/rostrrevor/residential/house/5550425>



Bevan Bruse
08 8431 8181



This floor plan is for illustration purposes only and all measurements are approximate. Any fixtures shown may not necessarily be included in the sale contract and it is essential that any queries are directed to the agent, and any information that is intended to be relied upon should be independently verified. Neither the agent vendor or the illustrators take any responsibility for any omission, wrongful inclusion or typographical error which may occur in this drawing as it is intended as an artist impression only. While every endeavor has been made to verify the correct details in this publication, neither the agent, vendor, nor typesetters accept any responsibility for any error or omission.