



1A Lomond Avenue KENSINGTON PARK SA

4 2 1

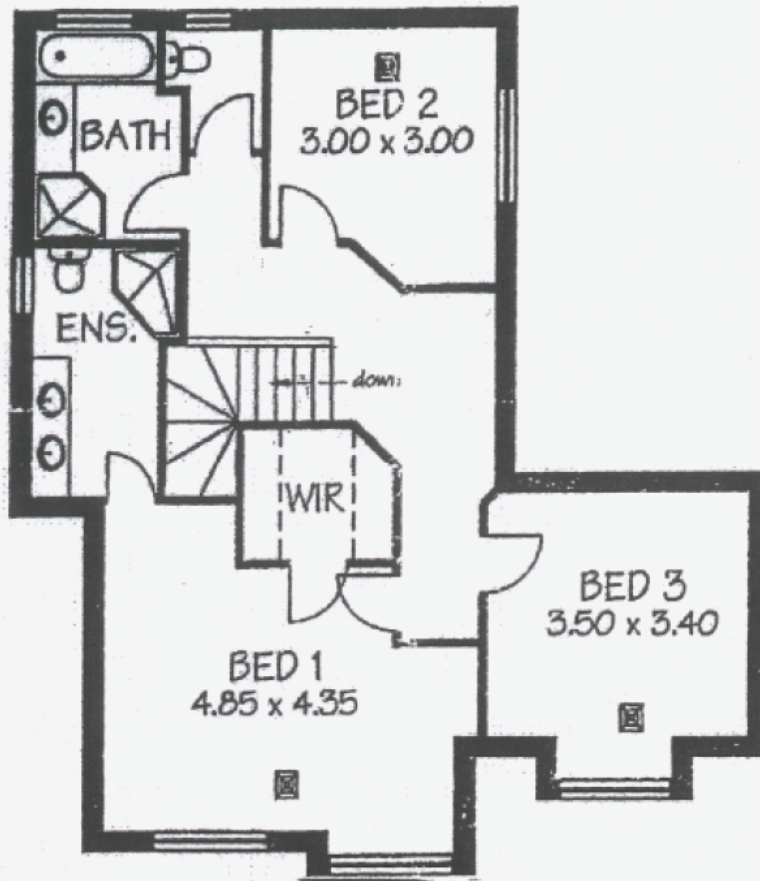
Generous in size. Easy care courtyard gardens. 3 or 4 bedrooms. Great location.

This well designed and well built home offers an entry hall leading to a generous sitting room. Continuing through to a generous dinning, kitchen and living area with direct access to the study, 4th bedroom or T.V. room. The upper level features 3 very desirable, good size bedrooms. Large main bathroom and excellent ensuite bathroom. Lower level has 3rd w.c and laundry, lockup garage and easy care outdoor garden areas. Great buying. Its a great home.

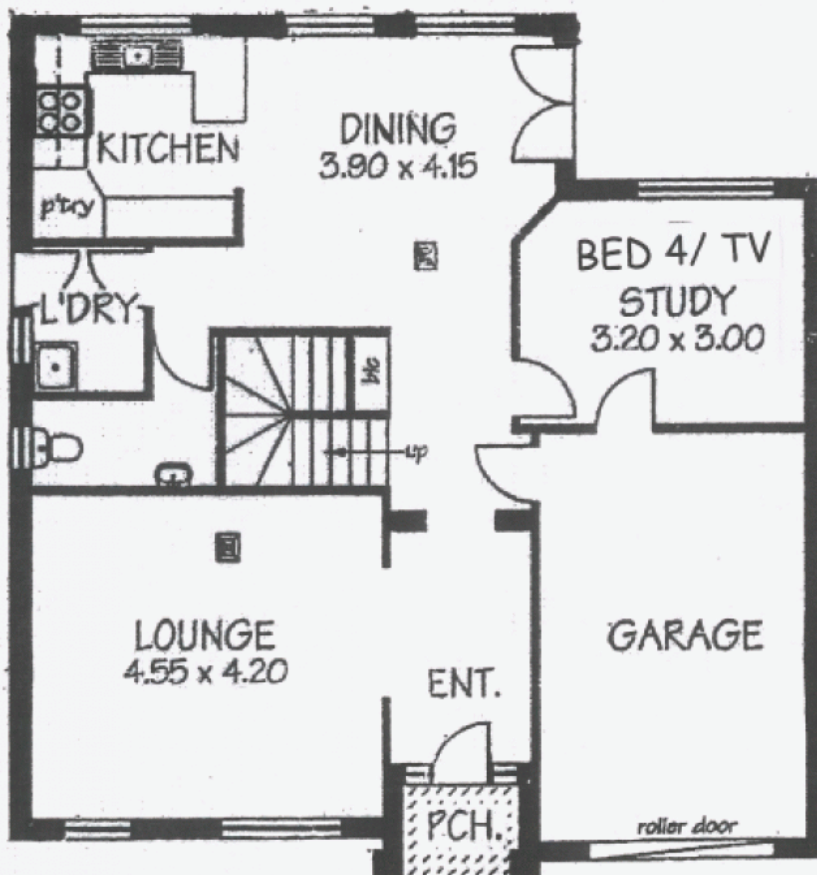
Land Size : 231 sqm

View : <https://www.bruse.com.au/sale/sa/eastern-suburbs/kensington-park/residential/house/550381>

Please contact Bevan Bruse 0419 809 852
Theon Bruse 0419 816 470
RLA 181689



UPPER LEVEL



LOWER LEVEL