



**59 Jenkins Avenue ROSTREVOR SA**

3 1 1

THE PROPERTY IS POSITIONED CLOSE TO 2 PARKS, 1 WITH TENNIS COURTS. WELL LOCATED IN A VERY DESIRABLE PART OF ROSTREVOR

This delightful property will suit many buyers in the market place as it could be used to live in or suitable for development.

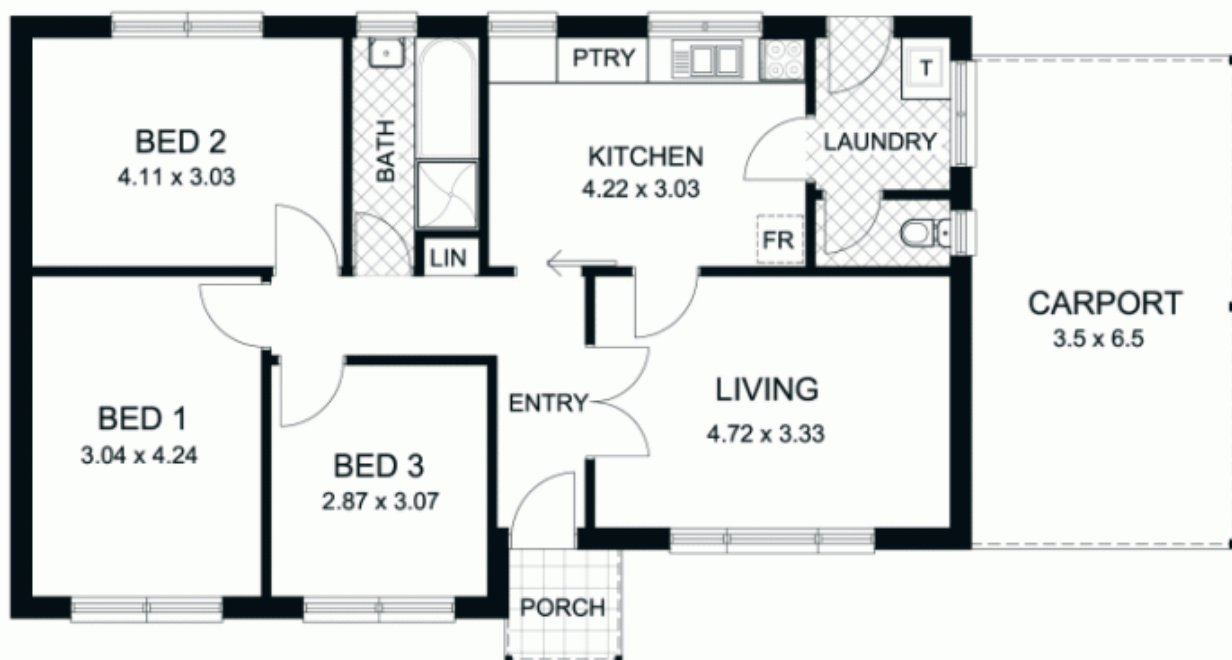
The allotment of land is 718m<sup>2</sup> with a frontage of 17.45m x 40.84m approximately.

The home is in reasonable condition allowing the opportunity for any buyer to rent the property out at this point in time prior to developing the land or for buyers who seek to acquire a home where they can build on additions to the rear on the generous allotment of land giving a great lifestyle for the year 2008 and onwards.

**Land Size** : 718 sqm  
**View** : <https://www.bruse.com.au/sale/sa/eastern-suburbs/rostrrevor/residential/house/5550345>



**Bevan Bruse**  
**08 8431 8181**



This floor plan is for illustration purposes only and all measurements are approximate. Any fixtures shown may not necessarily be included in the sale contract and it is essential that any queries are directed to the agent, and any information that is intended to be relied upon should be independently verified. Neither the agent, vendor or the illustrators take any responsibility for any omission, wrongful inclusion or typographical error which may occur in this drawing as it is intended as an artist impression only. While every endeavour has been made to verify the correct details in this publication, neither the agent, vendor, nor typesetters accept any responsibility for any error or omission.