

#### 4B Bruce Avenue Rostrevor SA

3 2 2

YOU WILL BE IMPRESSED BY THE QUALITY AND DESIGNER DECOR OF THIS CUSTOM-BUILT HOME. 3M HIGH CEILINGS. WOW FACTOR PLUS!

What an awesome location. Bruce Avenue is a beautiful tree lined street with a pretty park and playground only one house away.

GENEROUS IN SIZE WITH OVER 240M2 OF HOUSE SIZE AND A GREAT SIZE BACK YARD FOR THE CHILDREN TO PLAY.

Stunning views to the hills.

THE UPPER LEVEL INCLUDES A HUGE SECOND LIVING AREA COMPLETE WITH A BUILT IN STUDY DESK NOOK. THIS IS A GREAT CHILDREN'S AREA AS

**Price** : \$ 715,000

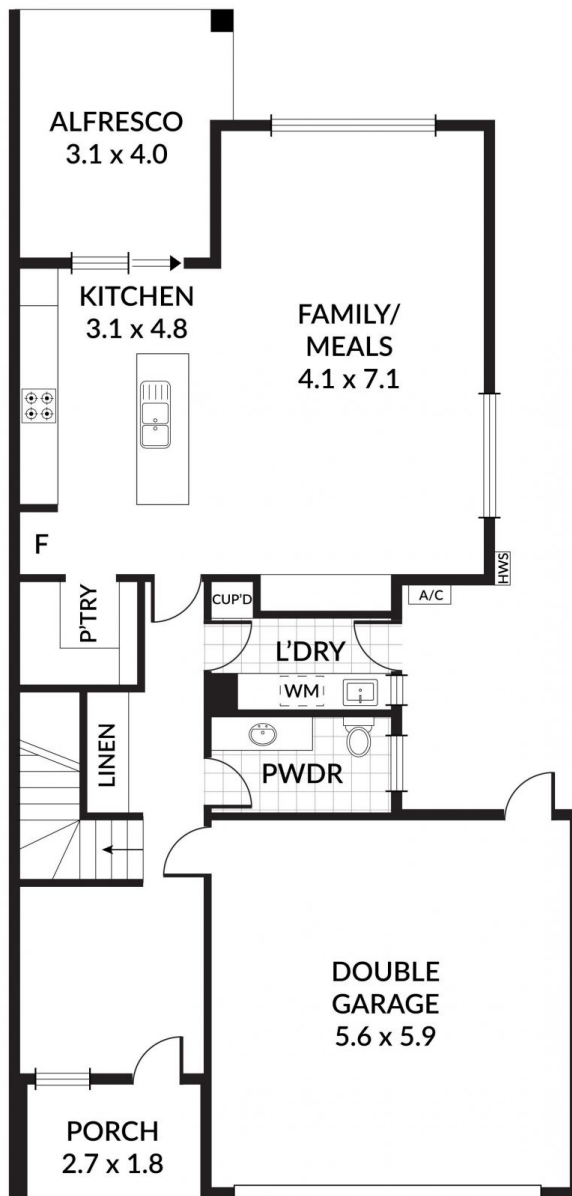
**View** : <https://www.bruse.com.au/sale/sa/eastern-suburbs/rostrrevor/residential/house/5549544>



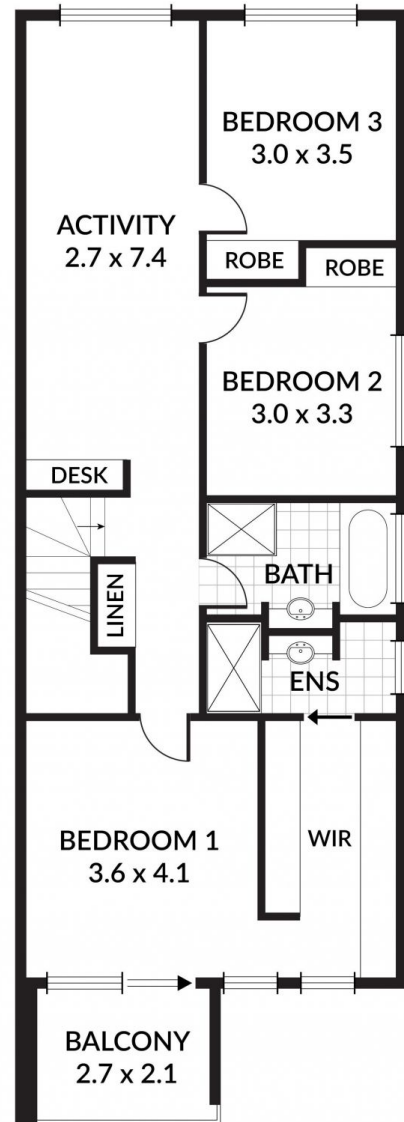
**Theon Bruse**  
08 8431 8181



**Bevan Bruse**  
08 8431 8181

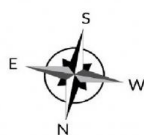


LOWER FLOOR



UPPER FLOOR

**4B BRUCE AVENUE**



Scale in metres. Indicative only. Dimensions are approximate. All information contained herein is gathered from sources we believe to be reliable. However we cannot guarantee its accuracy and interested persons should rely on their own enquiries.