



19 Gandys Gully Road Stonyfell SA

4 2 3

THE VENDORS ARE KEEN TO SELL AND ALL GENUINE OFFERS WILL BE PUT TO THE VENDORS.

BRILLIANT ACCOMMODATION, BRILLIANT LOCATION, SPECTACULAR CITY AND RURAL VIEWS AND CERTAINLY A HOME THAT BUYERS WILL LOVE TO LIVE IN.

A SPECTACULAR HOME THAT EVERY BUYER WILL APPRECIATE THE QUALITY AND THE BRILLIANT ACCOMMODATION AND LIFESTYLE THAT THIS PROPERTY OFFERS.

Immediately when you inspect this residence you will understand what lifestyle is about in this exciting location.

The entrance area of the home leads to the lower level

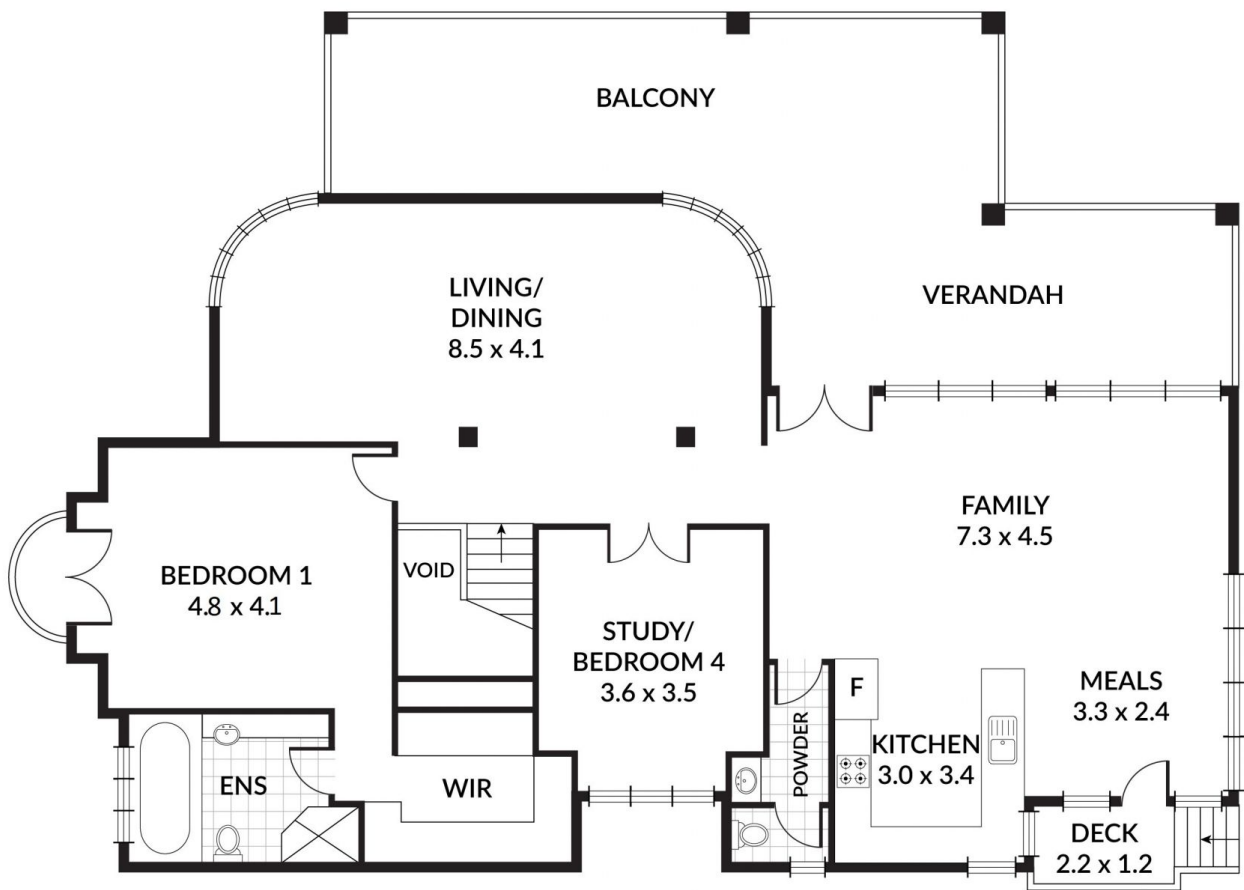
Price : \$ 1,250,000
Land Size : 650 sqm
View : <https://www.bruse.com.au/sale/sa/eastern-suburbs/stonyfell/residential/house/5549541>



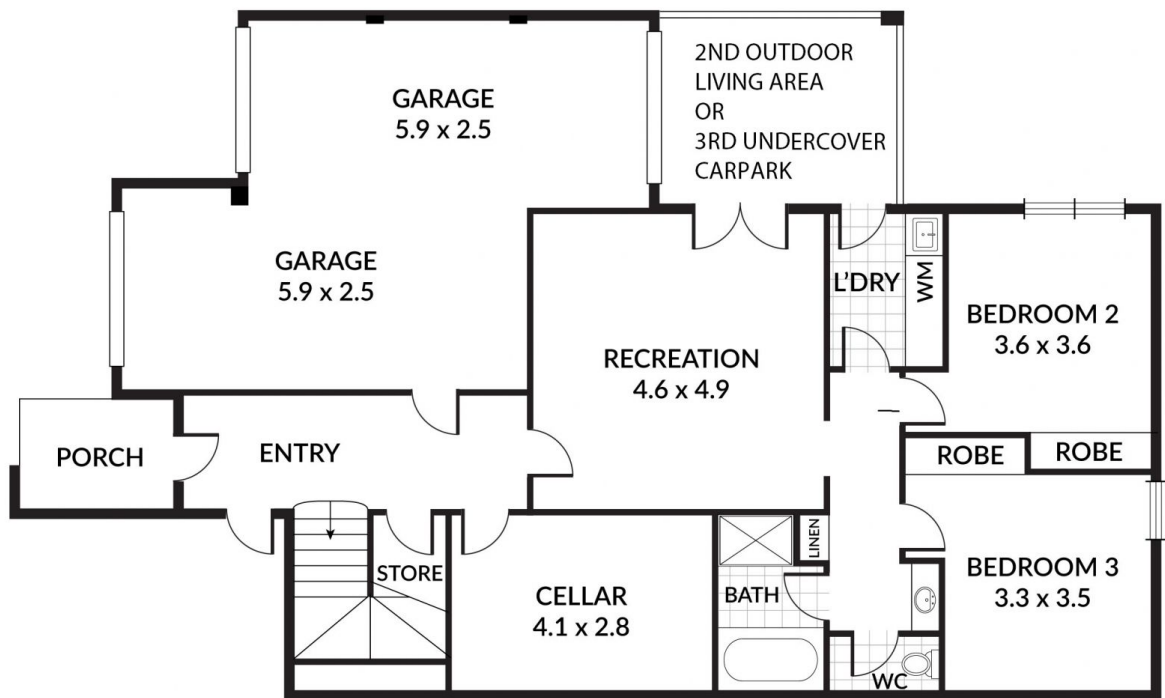
Bevan Bruse
08 8431 8181



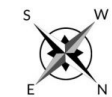
Theon Bruse
08 8431 8181



UPPER LEVEL



LOWER LEVEL



Scale in metres. Indicative only. Dimensions are approximate. All information contained herein is gathered from sources we believe to be reliable. However we cannot guarantee its accuracy and interested persons should rely on their own enquiries.

GANDYS GULLY ROAD

