



64 Farnham Road Ashford SA

3 2 2

ALL HOMES SOLD!

2 GENEROUS LIVING AREAS MAXIMIZING NATURAL LIGHT.

NORTH FACING REAR YARDS & MAIN LIVING AREAS.
SEPARATE TORRENS TITLE HOMES.
SUPER TRENDY KITCHENS COMPLETE WITH SOFT CLOSE DOORS AND DRAWERS, SOLID STONE BENCH TOPS AND HIGH END BOSCH APPLIANCES WITH BIG COOKTOPS.

3 bedrooms all with built in robes.
2 bathrooms plus a 3rd toilet on the lower level.

LOCK UP GARAGES WITH EXTRA DEEP STORAGE/SHELVING AREA.

Price : \$ 598,000

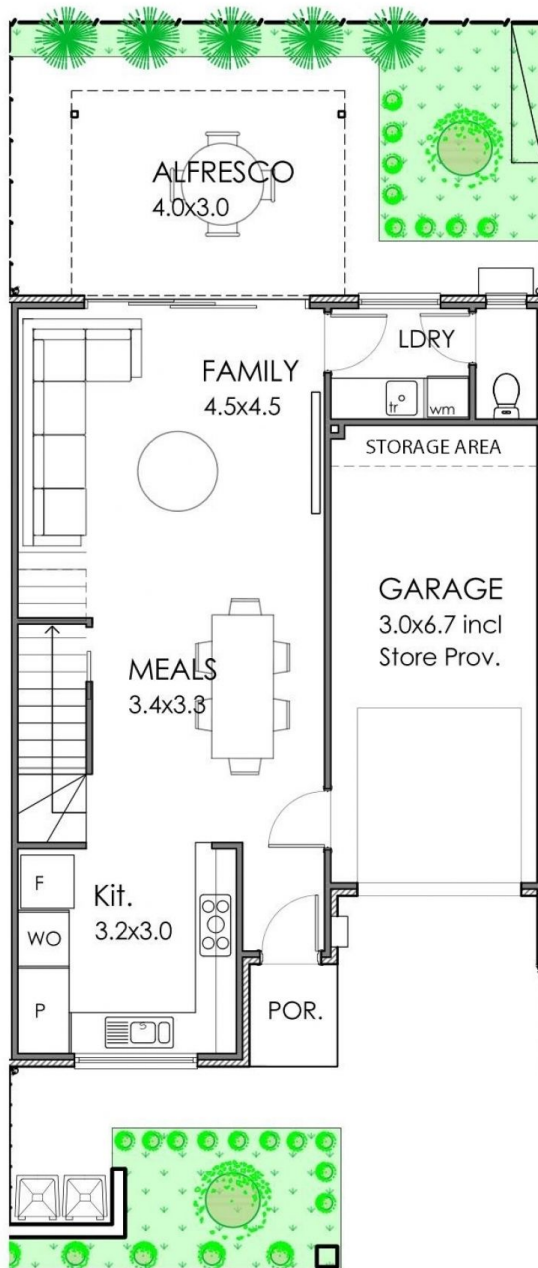
View : <https://www.bruse.com.au/sale/sa/western-beach-side-suburbs/ashford/residential/house/5549535>



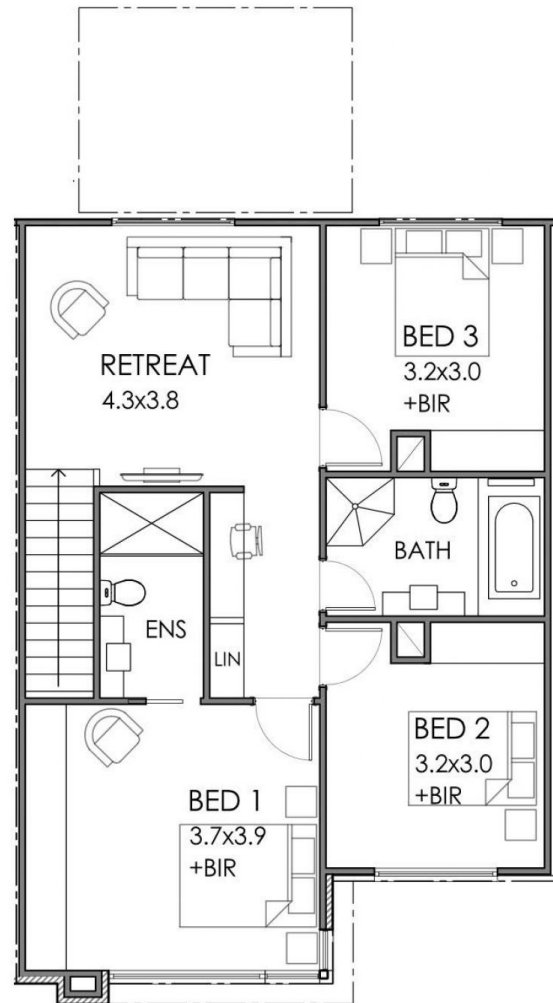
Theon Bruse
08 8431 8181



Toby Shipway
8413 8181



LOWER FLOOR PLAN



UPPER FLOOR PLAN



SCALE 1 : 100



GROUND MAIN LIVING	UPPER MAIN LIVING	GARAGE	PORTICO	ALFRESCO	TOTAL
57.8 SQM	83.3 SQM	21.3 SQM	1.9 SQM	12 SQM	176.3 SQM