



1,5 & 8/2 La Scala Court Paradise SA

3 2 2

JUST COMPLETED COME ALONG FOR A LOOK.

THESE NEW HOMES ARE EXCELLENT VALUE FOR MONEY WITH DOUBLE GARAGES.

At the end of the street is Linear Park which truly is a joy and perfect to take in the peaceful lifestyle with family and friends.

Up to 200m² of total house size, these homes are very generous in size.

Architecturally designed by well known Alberto D'Andrea who has been designing new homes for over 40 years in Adelaide.

Absolute quality of design & building materials. Everything

Price : \$455,000 - \$480,000

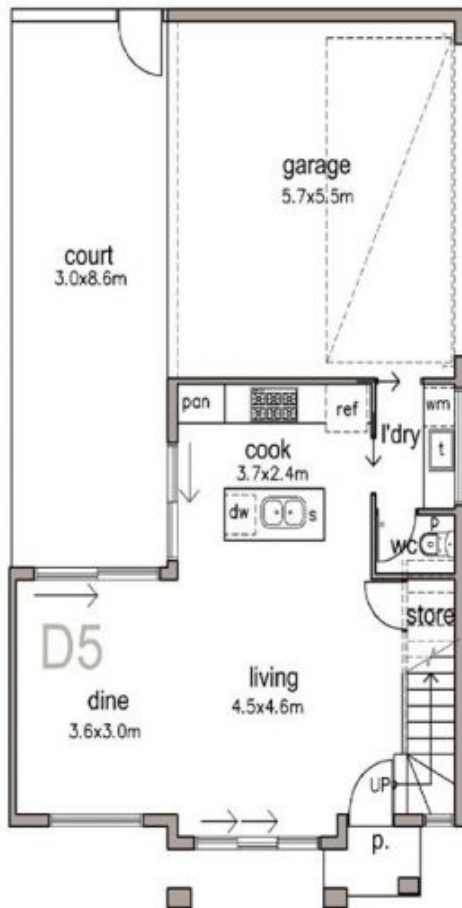
View : <https://www.bruse.com.au/5549521>



Theon Bruse
08 8431 8181



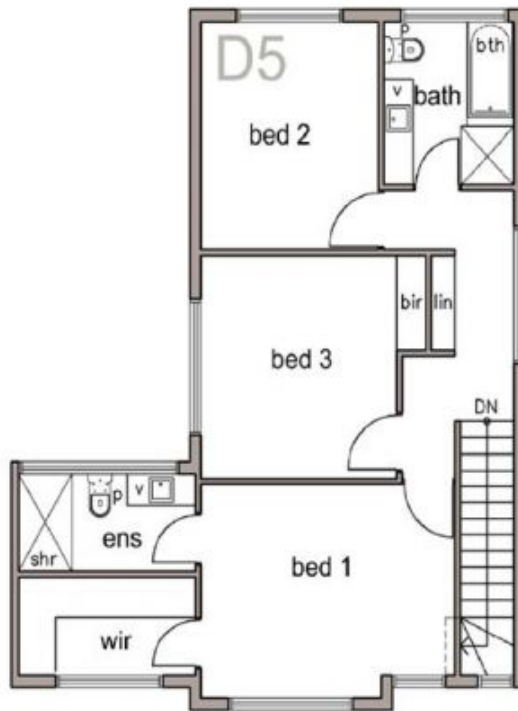
Toby Shipway
8413 8181



GROUND FLOOR PLAN

DWELLING 5

NOTE: THIS PLAN / DOCUMENT IS FOR ILLUSTRATION PURPOSES ONLY. ALL DIMENSIONS ARE APPROXIMATE. WHILE EVERY ENDEAVOUR HAS BEEN MADE TO VERIFY THE CORRECT DETAILS NEITHER THE VENDOR, THE AGENT, NOR THE DESIGNER ACCEPT LIABILITY FOR ERROR OR OMISSION



UPPER FLOOR PLAN

DWELLING 5



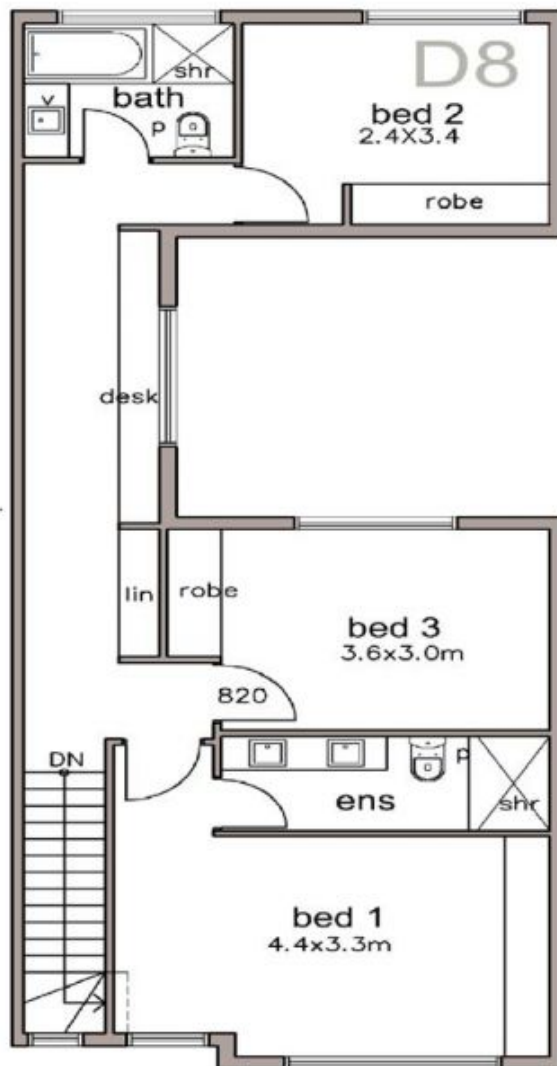
AREAS (sqm)

GROUND MAIN LIVING	52.0
UPPER MAIN LIVING	70.5
GARAGE	32.0
PORTICO	2.0
TOTAL	156.5



GROUND FLOOR PLAN

DWELLING 8



UPPER FLOOR PLAN

DWELLING 8



AREAS (sqm)

GROUND MAIN LIVING	47.0
UPPER MAIN LIVING	78.0
GARAGE	38.8
PORTICO	2.0
TOTAL	165.8

NOTE: THIS PLAN / DOCUMENT IS FOR ILLUSTRATION PURPOSES ONLY. ALL DIMENSIONS ARE APPROXIMATE. WHILE EVERY ENDEAVOUR HAS BEEN MADE TO VERIFY THE CORRECT DETAILS NEITHER THE VENDOR, THE AGENT, NOR THE DESIGNER ACCEPT LIABILITY FOR ERROR OR OMISSION