

1E New Cut Street Hectorville SA

3 2 2

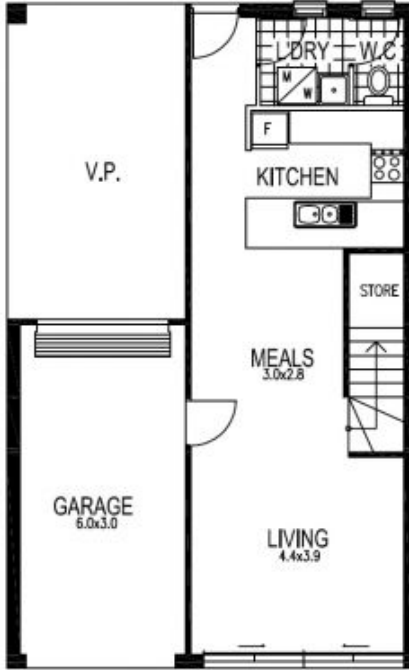
NOW LEASED: OPEN INSPECTION CANCELLED.

Generous in size with 166m² of house size. Free flowing living space. Easy care garden. This home features Caesarstone benchtops, SMEG Appliances, single car garage plus additional undercover carpark.

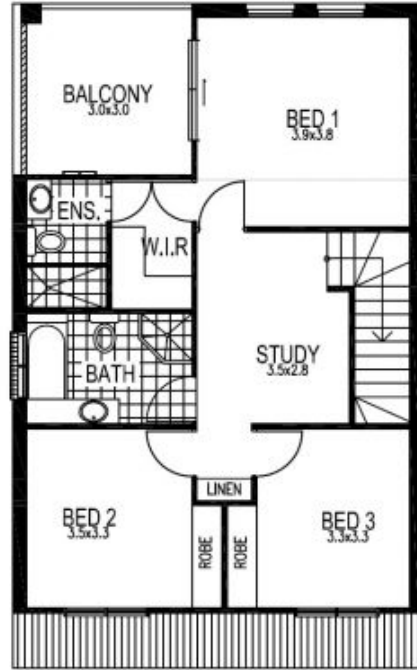
This is an exciting opportunity to live in the leafy Hectorville. Close to great shopping precincts, public transport and lots of open green spaces to enjoy with family and friends. Only 10 minutes to the city!

The near new home includes 3 bedrooms, second and third with built in robes. The main bedroom benefits from a large private balcony, ensuite and walk in robe. The home includes 2 designer inspired bathrooms plus a 3rd toilet on the lower level. There is also a handy study area to the

View : <https://www.bruse.com.au/lease/sa/eastern-suburbs/hectorville/residential/house/5549492>



GROUND FLOOR 
DWELLING 5



UPPER FLOOR
DWELLING 5

AREAS m²

| GROUND FLOOR | UPPER FLOOR | GARAGE | BALCONY | TOTAL |
|--------------------|--------------------|--------------------|-------------------|---------------------|
| 49.4m ² | 71.1m ² | 39.0m ² | 9.6m ² | 169.1m ² |